

**INOXKIT**

2011

**Italiano**  
**English**

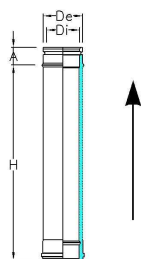
**IKA**



**IKA**

**INOXKIT**

## IKATDP1C..



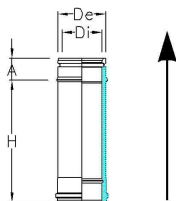
TUBO m 1 COIBENTATO ARIA 10mm - INTERNO INOX AISI 316L ED ESTERNO INOX AISI 304

1 m PIPE AIR INSULATED 10mm - INTERNAL STAINLESS STEEL AISI 316L AND EXTERNAL STAINLESS STEEL AISI 304

EN 1856-1 T200 P1 W V2 L50040 O20

|    |     |     |     |     |     |     |     |
|----|-----|-----|-----|-----|-----|-----|-----|
| Di | 80  | 100 | 130 | 160 | 180 | 200 | 230 |
| De | 100 | 120 | 150 | 180 | 200 | 220 | 250 |
| H  | 940 | 940 | 940 | 940 | 940 | 940 | 940 |
| A  | 54  | 54  | 54  | 54  | 54  | 54  | 54  |

## IKATDP5C..



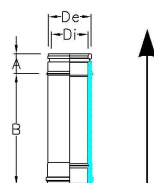
TUBO m, 0,50 COIBENTATO ARIA 10mm - INTERNO INOX AISI 316L ED ESTERNO INOX AISI 304

m 0,50 PIPE - AIR INSULATED 10 mm - INTERNAL STAINLESS STEEL AISI 316L AND EXTERNAL STAINLESS STEEL 304

EN 1856-1 T200 P1 W V2 L50040 O20

|    |     |     |     |     |     |     |     |
|----|-----|-----|-----|-----|-----|-----|-----|
| Di | 80  | 100 | 130 | 160 | 180 | 200 | 230 |
| De | 100 | 120 | 150 | 180 | 200 | 220 | 250 |
| H  | 440 | 440 | 440 | 440 | 440 | 440 | 440 |
| A  | 54  | 54  | 54  | 54  | 54  | 54  | 54  |

## IKATDP25C..



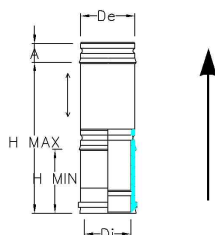
TUBO m 1 COIBENTATO ARIA 10mm - INTERNO INOX AISI 316L ED ESTERNO INOX AISI 304

0,25 m PIPE AIR INSULATED 10mm - INTERNAL STAINLESS STEEL AISI 316L AND EXTERNAL STAINLESS STEEL AISI 304

EN 1856-1 T200 P1 W V2 L50040 O20

|    |     |     |     |     |     |     |     |
|----|-----|-----|-----|-----|-----|-----|-----|
| Di | 80  | 100 | 130 | 160 | 180 | 200 | 230 |
| De | 100 | 120 | 150 | 180 | 200 | 220 | 250 |
| H  | 190 | 190 | 190 | 190 | 190 | 190 | 190 |
| A  | 54  | 54  | 54  | 54  | 54  | 54  | 54  |

## IKAETDP4C..



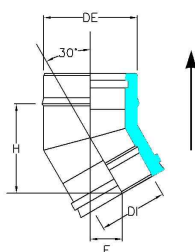
ELEMENTO TELESCOPICO COIBENTATO ARIA 10mm - INTERNO INOX AISI 316L ED ESTERNO INOX AISI 304

ADJUSTABLE PIPE AIR INSULATED 10mm - INTERNAL STAINLESS STEEL AISI 316L AND EXTERNAL STAINLESS STEEL AISI 304

EN 1856-1 T200 P1 W V2 L50040 O20

|      |     |     |     |     |     |     |     |
|------|-----|-----|-----|-----|-----|-----|-----|
| Di   | 80  | 100 | 130 | 160 | 180 | 200 | 230 |
| De   | 100 | 120 | 150 | 180 | 200 | 220 | 250 |
| Hmax | 390 | 390 | 390 | 390 | 390 | 390 | 390 |
| Hmin | 257 | 257 | 257 | 257 | 257 | 257 | 257 |
| A    | 54  | 54  | 54  | 54  | 54  | 54  | 54  |

## IKAGDP30C..



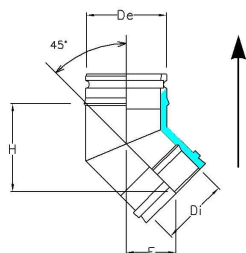
CURVA 30° COIBENTATO ARIA 10mm - INTERNO INOX AISI 316L ED ESTERNO INOX AISI 304

30° FIXED BEND AIR INSULATED 10mm - INTERNAL STAINLESS STEEL AISI 316L AND EXTERNAL STAINLESS STEEL AISI 304

EN 1856-1 T200 P1 W V2 L50040 O20

|    |     |     |     |     |     |     |     |
|----|-----|-----|-----|-----|-----|-----|-----|
| Di | 80  | 100 | 130 | 160 | 180 | 200 | 230 |
| De | 100 | 120 | 150 | 180 | 200 | 220 | 250 |
| H  | 116 | 119 | 122 | 130 | 135 | 142 | 147 |
| E  | 44  | 46  | 48  | 51  | 51  | 53  | 54  |

## IKAGDP45C..



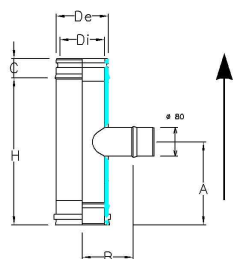
CURVA 45° COIBENTATO ARIA 10mm - INTERNO INOX AISI 316L ED ESTERNO INOX AISI 304

45° FIXED BEND AIR INSULATED 10mm - INTERNAL STAINLESS STEEL AISI 316L AND EXTERNAL STAINLESS STEEL AISI 304

EN 1856-1 T200 P1 W V2 L50040 O20

|    |     |     |     |     |     |     |     |
|----|-----|-----|-----|-----|-----|-----|-----|
| Di | 80  | 100 | 130 | 160 | 180 | 200 | 230 |
| De | 100 | 120 | 150 | 180 | 200 | 220 | 250 |
| H  | 110 | 120 | 126 | 137 | 143 | 160 | 164 |
| E  | 50  | 52  | 75  | 79  | 82  | 88  | 91  |

## IKARTDPCU..



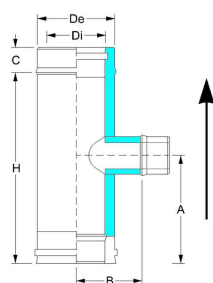
RACCORDO "T 90°" CON USCITA MONOPARETE Ø 80 COIBENTATO ARIA 10mm - INTERNO INOX AISI 316L ED ESTERNO INOX AISI 304

90° REDUCING TEE TO SINGLE WALL Ø 80 mm AIR INSULATED 10mm - INTERNAL STAINLESS STEEL AISI 316L AND EXTERNAL STAINLESS STEEL AISI 304

EN 1856-1 T200 P1 W V2 L50040 O20

|    |     |     |     |     |     |     |     |
|----|-----|-----|-----|-----|-----|-----|-----|
| Di | 80  | 100 | 130 | 160 | 180 | 200 | 230 |
| De | 100 | 120 | 150 | 180 | 200 | 220 | 250 |
| H  | 190 | 190 | 190 | 190 | 190 | 190 | 190 |
| A  | 123 | 123 | 123 | 123 | 123 | 123 | 123 |
| B  | 70  | 80  | 95  | 110 | 120 | 130 | 145 |
| C  | 54  | 54  | 54  | 54  | 54  | 54  | 54  |

## IKARTDPCUDP..

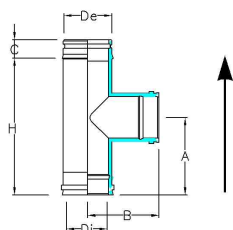


RACCORDO "T 90°" CON USCITA Ø 80 COIBENTATO ARIA 10mm - INTERNO INOX AISI 316L ED ESTERNO INOX AISI 304

90° REDUCING TEE TO Ø 80 mm AIR INSULATED 10mm - INTERNAL STAINLESS STEEL AISI 316L AND EXTERNAL STAINLESS STEEL AISI 304

EN 1856-1 T200 P1 W V2 L50040 O20

## IKARTDPC..



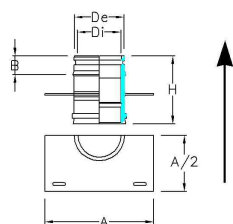
RACCORDO "T 90°" COIBENTATO ARIA 10mm - INTERNO INOX AISI 316L ED ESTERNO INOX AISI 304

90° TEE AIR INSULATED 10mm - INTERNAL STAINLESS STEEL AISI 316L AND EXTERNAL STAINLESS STEEL AISI 304

EN 1856-1 T200 P1 W V2 L50040 O20

|    |     |     |     |     |     |     |     |
|----|-----|-----|-----|-----|-----|-----|-----|
| Di | 80  | 100 | 130 | 160 | 180 | 200 | 230 |
| De | 100 | 120 | 150 | 180 | 200 | 220 | 250 |
| H  | 190 | 270 | 270 | 270 | 440 | 440 | 440 |
| A  | 123 | 160 | 160 | 160 | 245 | 245 | 245 |
| B  | 138 | 140 | 155 | 170 | 180 | 190 | 205 |
| C  | 54  | 54  | 54  | 54  | 54  | 54  | 54  |

## IKAPIASIC..



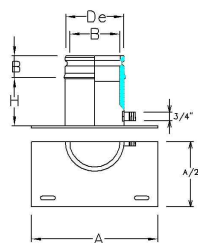
PIASTRA INTERMEDIA (SENZA SUPPORTI) COIBENTATO ARIA 10mm -  
INTERNO INOX AISI 316L ED ESTERNO INOX AISI 304

INTERMEDIATE ANCHOR PLATE (WITHOUT SUPPORTS) AIR  
INSULATED 10mm - INTERNAL STAINLESS STEEL AISI 316L AND  
EXTERNAL STAINLESS STEEL AISI 304

EN 1856-1 T200 P1 W V2 L50040 O20

|    |     |     |     |     |     |     |     |
|----|-----|-----|-----|-----|-----|-----|-----|
| Di | 80  | 100 | 130 | 160 | 180 | 200 | 230 |
| De | 100 | 120 | 150 | 180 | 200 | 220 | 250 |
| H  | 190 | 190 | 190 | 190 | 190 | 190 | 190 |
| A  | 200 | 220 | 250 | 280 | 300 | 320 | 350 |
| B  | 54  | 54  | 54  | 54  | 54  | 54  | 54  |

## IKAPIASTRC..



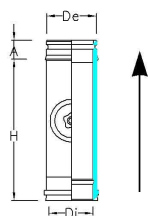
PIASTRA BASE CON SCARICO LATERALE COIBENTATO ARIA 10mm -  
INTERNO INOX AISI 316L ED ESTERNO INOX AISI 304

BASE PLATE WITH DRAIN PLUG AIR INSULATED 10mm - INTERNAL  
STAINLESS STEEL AISI 316L AND EXTERNAL STAINLESS STEEL AISI  
304

EN 1856-1 T200 P1 W V2 L50040 O20

|    |     |     |     |     |     |     |     |
|----|-----|-----|-----|-----|-----|-----|-----|
| Di | 80  | 100 | 130 | 160 | 180 | 200 | 230 |
| De | 100 | 120 | 150 | 180 | 200 | 220 | 250 |
| H  | 100 | 100 | 100 | 100 | 100 | 100 | 100 |
| A  | 200 | 220 | 250 | 280 | 300 | 320 | 350 |
| B  | 54  | 54  | 54  | 54  | 54  | 54  | 54  |

## IKATSIDPC..



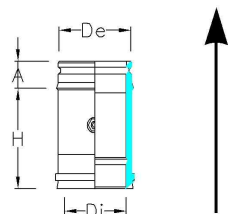
TUBO CON PORTELLO DI ISPEZIONE TONDO COIBENTATO ARIA  
10mm - INTERNO INOX AISI 316L ED ESTERNO INOX AISI 304

SECTION WITH ROUND TEST POINT AIR INSULATED 10mm -  
INTERNAL STAINLESS STEEL AISI 316L AND EXTERNAL STAINLESS  
STEEL AISI 304

EN 1856-1 T200 P1 W V2 L50040 O20

|    |     |     |     |     |     |     |     |
|----|-----|-----|-----|-----|-----|-----|-----|
| Di | 80  | 100 | 130 | 160 | 180 | 200 | 230 |
| De | 100 | 120 | 150 | 180 | 200 | 220 | 250 |
| H  | 190 | 270 | 270 | 270 | 440 | 440 | 440 |
| A  | 54  | 54  | 54  | 54  | 54  | 54  | 54  |

## IKAPF..



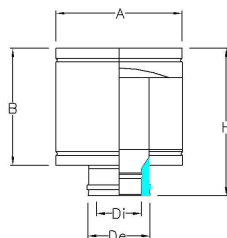
ELEMENTO PRELIEVO FUMI CON MANICOTTO FILETTATO COIBENTATO ARIA 10mm - INTERNO INOX AISI 316L ED ESTERNO INOX AISI 304

FUMES TEST SECTION WITH THREADED SLEEVE AIR INSULATED 10mm - INTERNAL STAINLESS STEEL AISI 316L AND EXTERNAL STAINLESS STEEL AISI 304

EN 1856-1 T200 P1 W V2 L50040 O20

|    |     |     |     |     |     |     |     |
|----|-----|-----|-----|-----|-----|-----|-----|
| Di | 80  | 100 | 130 | 160 | 180 | 200 | 230 |
| De | 100 | 120 | 150 | 180 | 200 | 220 | 250 |
| H  | 190 | 190 | 190 | 190 | 190 | 190 | 190 |
| A  | 54  | 54  | 54  | 54  | 54  | 54  | 54  |
| B  | 65  | 65  | 65  | 65  | 65  | 65  | 65  |

## IKATADPC..

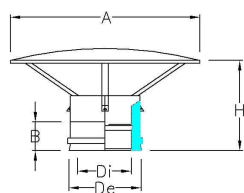


TERMINALE ANTINTEMPERIE COIBENTATO ARIA 10mm - INOX

ANTI DOWN-DRAUGHT TERMINAL AIR INSULATED 10mm - STAINLESS STEEL

|    |     |     |     |     |     |     |     |
|----|-----|-----|-----|-----|-----|-----|-----|
| Di | 80  | 100 | 130 | 160 | 180 | 200 | 230 |
| De | 100 | 120 | 150 | 180 | 200 | 220 | 250 |
| H  | 290 | 340 | 340 | 420 | 420 | 420 | 420 |
| A  | 200 | 250 | 300 | 350 | 400 | 400 | 500 |
| B  | 200 | 250 | 250 | 330 | 330 | 330 | 330 |

## IKACCDPC..

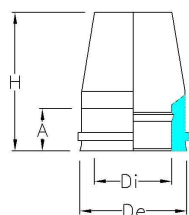


CAPPELLO CINESE COIBENTATO ARIA 10mm - INOX

RAIN CAP AIR INSULATED 10mm - STAINLESS STEEL

|    |     |     |     |     |     |     |     |
|----|-----|-----|-----|-----|-----|-----|-----|
| Di | 80  | 100 | 130 | 160 | 180 | 200 | 230 |
| De | 100 | 120 | 150 | 180 | 200 | 220 | 250 |
| H  | 190 | 190 | 230 | 230 | 250 | 250 | 270 |
| A  | 200 | 250 | 300 | 400 | 400 | 400 | 500 |
| B  | 65  | 65  | 65  | 65  | 65  | 65  | 65  |

## IKATTCDPC..

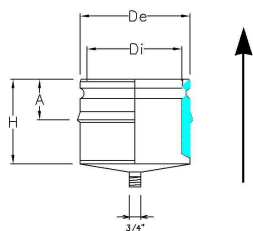


TERMINALE TRONCO CONICO COIBENTATO ARIA 10mm - INOX

VENTURI CONE TERMINAL AIR INSULATED 10mm - STAINLESS STEEL

|    |     |     |     |     |     |     |     |
|----|-----|-----|-----|-----|-----|-----|-----|
| Di | 80  | 100 | 130 | 160 | 180 | 200 | 230 |
| De | 100 | 120 | 150 | 180 | 200 | 220 | 250 |
| H  | 235 | 235 | 235 | 235 | 235 | 235 | 235 |
| A  | 65  | 65  | 65  | 65  | 65  | 65  | 65  |

## IKATAPDP4C..



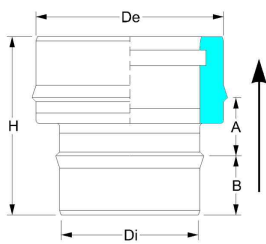
SCARICO CONDENSA COIBENTATO ARIA 10mm - INTERNO INOX AISI 316L ED ESTERNO INOX AISI 304

TEE CAP WITH CONDENSE DRAIN AIR INSULATED 10mm - INTERNAL STAINLESS STEEL AISI 316L AND EXTERNAL STAINLESS STEEL AISI 304

EN 1856-1 T200 P1 W V2 L50040 O20

|    |     |     |     |     |     |     |     |
|----|-----|-----|-----|-----|-----|-----|-----|
| Di | 80  | 100 | 130 | 160 | 180 | 200 | 230 |
| De | 100 | 120 | 150 | 180 | 200 | 220 | 250 |
| H  | 115 | 115 | 115 | 115 | 115 | 115 | 115 |
| A  | 54  | 54  | 54  | 54  | 54  | 54  | 54  |

## IKARCIDP..



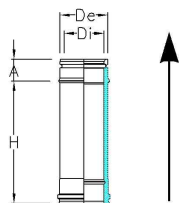
RACCORDO MONO-DOPPIA (RACCORDO CALDAIA) COIBENTATO ARIA 10mm - INTERNO INOX AISI 316L ED ESTERNO INOX AISI 304

SINGLE-DOUBLE ADAPTOR (BOILER ADAPTOR) AIR INSULATED 10mm - INTERNAL STAINLESS STEEL AISI 316L AND EXTERNAL STAINLESS STEEL AISI 304

EN 1856-1 T200 P1 W V2 L50040 O20

|    |     |     |     |     |     |     |     |
|----|-----|-----|-----|-----|-----|-----|-----|
| Di | 80  | 100 | 130 | 160 | 180 | 200 | 230 |
| De | 100 | 120 | 150 | 180 | 200 | 220 | 250 |
| H  | 140 | 140 | 140 | 140 | 140 | 140 | 140 |
| A  | 54  | 54  | 54  | 54  | 54  | 54  | 54  |

# IKATDP5C..



TUBO m 0,50 COIBENTATO ARIA 10mm - INTERNO INOX AISI 316L ED ESTERNO INOX AISI 304

0,50 m PIPE AIR INSULATED 10mm - INTERNAL STAINLESS STEEL AISI 316L AND EXTERNAL STAINLESS STEEL AISI 304

EN 1856-1 T200 P1 W V2 L50040 O20

|    |     |     |     |     |     |     |     |
|----|-----|-----|-----|-----|-----|-----|-----|
| Di | 80  | 100 | 130 | 160 | 180 | 200 | 230 |
| De | 100 | 120 | 150 | 180 | 200 | 220 | 250 |
| H  | 440 | 440 | 440 | 440 | 440 | 440 | 440 |
| A  | 54  | 54  | 54  | 54  | 54  | 54  | 54  |



ACCESSORI

ACCESSORIES

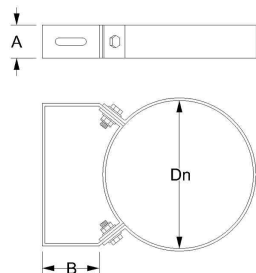
**INOXIT**







## IKCOLSS..

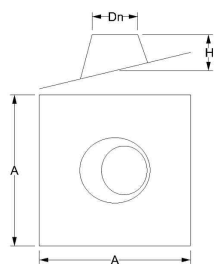


COLLARE A MURO INOX

WALL BRACKET IN STAINLESS STEEL

|    |    |     |     |     |     |     |     |     |     |     |     |     |     |     |     |     |
|----|----|-----|-----|-----|-----|-----|-----|-----|-----|-----|-----|-----|-----|-----|-----|-----|
| Dn | 80 | 100 | 110 | 120 | 125 | 130 | 140 | 150 | 160 | 180 | 200 | 220 | 250 | 300 | 350 | 400 |
| A  | 40 | 40  | 40  | 40  | 40  | 40  | 40  | 40  | 40  | 40  | 40  | 40  | 40  | 40  | 40  | 100 |
| B  | 50 | 50  | 50  | 50  | 50  | 50  | 50  | 50  | 50  | 50  | 50  | 50  | 50  | 50  | 50  | 50  |

## IKFPS5S..



FALDALE REGOLABILE 5/30 INOX DN 80 CON BASE ALLUMINIO  
SENZA/FASC ANTINTEMP

flashing adjustable 5°-30° inox DN 80 with base in alluminium without  
storm collar

|    |     |     |     |     |     |     |     |     |     |     |     |     |     |     |     |     |
|----|-----|-----|-----|-----|-----|-----|-----|-----|-----|-----|-----|-----|-----|-----|-----|-----|
| Dn | 80  | 100 | 110 | 120 | 125 | 130 | 140 | 150 | 160 | 180 | 200 | 220 | 250 | 300 | 350 | 400 |
| H  | 120 | 120 | 130 | 130 | 150 | 150 | 150 | 150 | 160 | 170 | 180 | 210 | 210 | 230 | 200 | 200 |
| A  | 370 | 400 | 400 | 450 | 450 | 450 | 450 | 450 | 450 | 500 | 600 | 600 | 600 | 650 | 700 | 700 |



**INOX KIT s.r.l. BAGNACAVALLO**

Via Libeccio 9/11 - 48012 Bagnacavallo (RA)

Tel. 0545 62475

Fax 0545 926575

[info@inoxkit.it](mailto:info@inoxkit.it)

**INOX KIT s.r.l. MISANO**

Via Cella Raibano 31 - 47843 Misano Adriatico (RN)

Tel. 0541 694237

Fax 0541 425874

[misano@inoxkit.it](mailto:misano@inoxkit.it)

**INOX KIT s.r.l. SAN LAZZARO di SAVENA**

Via Caselle 71/A - 40068 San Lazzaro di Savena (BO)

Tel. 051 462373

Fax 051 6274534

[bologna@inoxkit.it](mailto:bologna@inoxkit.it)

